

# FLAT PANEL MONITORS

## 29LM101(51UN) SERIES

## 10.4" LCD MONITOR HEAD

### DISPLAY

Type:	AM Colour TFT
No. Colours:	256k
Max. Resolution:	640 x 480 pixels
Active Display Area:	211.2 x 158.4 mm
Display Protection:	Toughened Glass
Backlight:	Dual Edge CFL x 2
Backlight Life:	50,000 hours typical
Brightness:	350cd/m <sup>2</sup> typical
Contrast Ratio:	500:1 typical
Viewing Angles:	120° H, 100°V

### SIGNAL INPUTS

Video:	Analog RGB 0.7V p-p OR TTL RGB >2.75Vp-p
Input Connectors:	6 x BNC 75Ω 15-pin HD Female 9-pin D Female
Sync. Type/Level:	Separate H&V (+/-ve) TTL or Composite (-ve) TTL or Sync-on-Green (-ve) 0.3V
Multiscan Support:	640 x 480 VGA 640 x 400 640 x 350 + other pre-programmed timings in 15-30kHz range + user set-up and store
Horizontal Scan:	15 – 60kHz
Vertical Scan:	40 – 100Hz
Clock Rate:	80MHz max.
Controls: (On Screen Display buttons at rear)	Brightness, Contrast, H/V Position & Size, Frequency, Frequency Fine, Colour

### POWER INPUTS

AC Model:	External AC/DC Power Pack 110/230Vac 50/60Hz
DC Model:	12.0Vdc
Connector:	3-pin Circular
Power Consumption:	30W max.

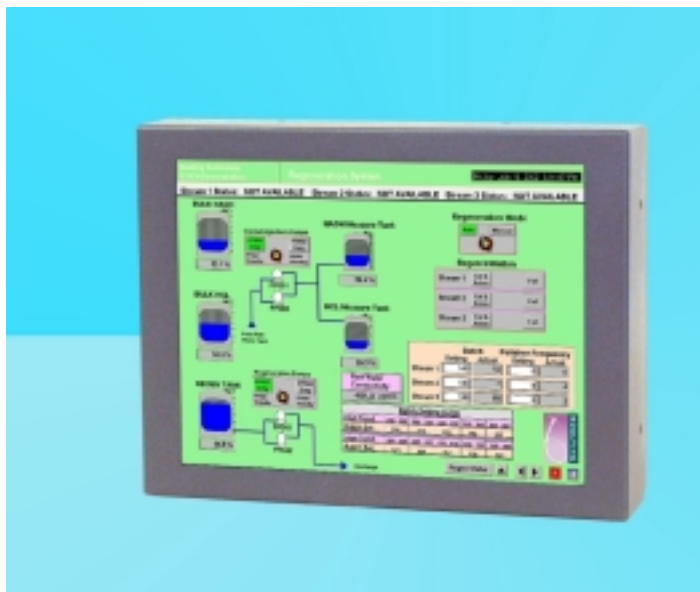
### PHYSICAL / ENVIRONMENTAL

Dimensions (approx):	258 x 195.5 x 70mm
Weight (approx):	3.0kg.
Housing:	Painted Alum. (Storm Grey)
Operating Temp:	0 <sup>0</sup> to 50 <sup>0</sup> C
Storage Temp:	-20 <sup>0</sup> to 60 <sup>0</sup> C

### PART NUMBERS

Standard Model	29LM101E51UN
AC Power Pack:	20BK0234H

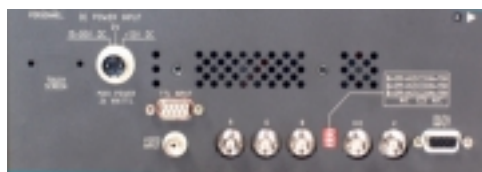
### VGA and Old Legacy signals



- **High Brightness/Long Life TFT panel**
- **15 to 60kHz Horizontal Scanning range**
- **40 to 100Hz Vertical Scanning range**
- **Programmable for non-standard Legacy signals**
- **Optional Touchscreen Integrated**
- **Universal Inputs via BNC / 9D / 15HD connectors**
- **VESA Standard Fixings for Ergo Arm**

The 29LM101 (51UN) Series of LCD monitor heads been designed for industrial applications in the Control field and other users that require a compact VGA monitor with a small footprint and a high brightness display with good viewing angles. The rugged, metal construction of the monitor ensures exceptional stability, especially important when touchscreen operation is necessary. VESA fixings for Ergo Arm Mounting are on the rear cover.

The KME A/D board has been designed to accept a wide range of signal timings from 15kHz up to VGA standard, including CGA & EGA legacy signals. Set-up controls for fine tuning of the display are located at the rear of the monitor. Once set, no further adjustments should be required, and the last setting is stored in memory.



View of input connectors at rear of monitor.

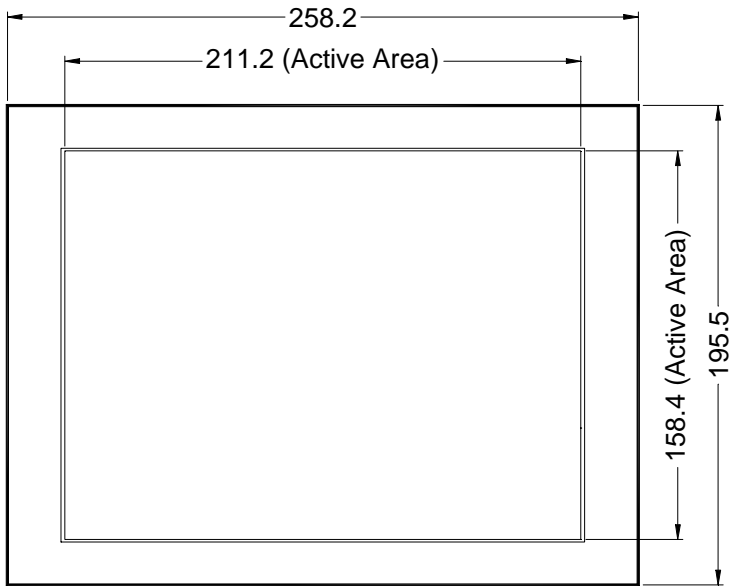
Due to a policy of continuous product development KME reserves the right to change specifications and descriptions without prior notification. All trademarks acknowledged 29lm101(51un)1 09/2004.



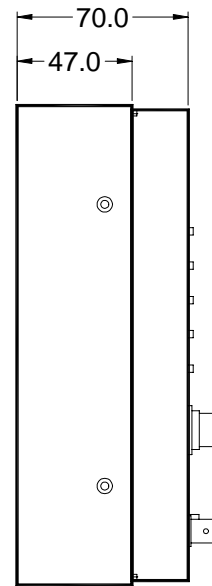
**29LM101(51UN) SERIES**

**10.4"LCD MONITOR HEAD**

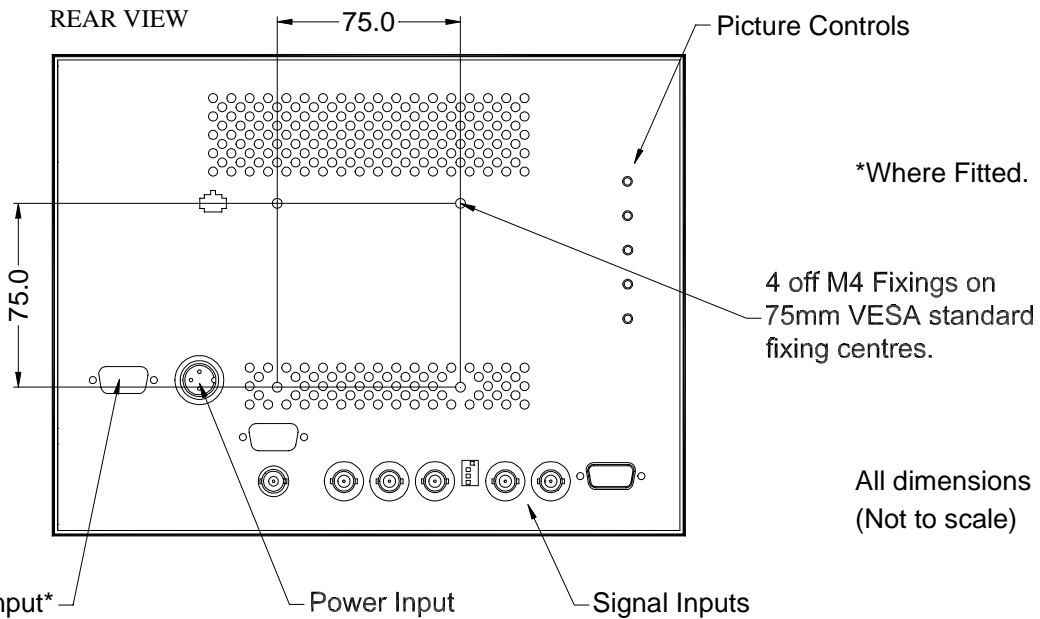
FRONT VIEW



SIDE VIEW

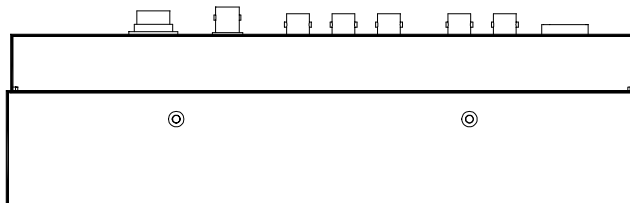


REAR VIEW



All dimensions in Millimetres  
(Not to scale)

BOTTOM VIEW



29lm101(51un)2

09/2004